

There's No Going Back Now

Embracing the Transformative Power of
Artificial Intelligence in Teaching, Learning,
Research, and the Workplace

Presented by

*Beth Rugg, Assistant Vice Chancellor for Client Engagement, OneIT;
Kiran Budhrani, Director of Teaching & Learning Innovation;
Deb Thomas, Ph.D., Associate Vice Chancellor for Research; and
Isabel Alele, Associate General Counsel*

Legal Symposium
October 10, 2024



Overview & Panel Introductions

- AI Steering Committee
- Charlotte's AI Vision and Guiding Principles
- AI Across UNC Charlotte
 - AI in Teaching
 - AI in Research
 - Classroom Use of AI
 - AI in the Workplace

AI Steering Committee



JESSE BEUMAN, M.S.

Assistant Vice Chancellor for
Enterprise Infrastructure & Deputy
CIO

The Office of OneIT

✉ jbeuman@charlotte.edu



KIRAN BUDHRANI, ED.D.

Director of Teaching & Learning
Innovation

Academic Affairs

✉ kiranbudhrani@charlotte.edu



MIKE CARLIN, PH.D.

Vice Chancellor for OneIT; Chief
Information Officer; Chief University
Innovation and Process Officer

The Office of OneIT

✉ Mike.Carlin@charlotte.edu



KATHARINA FINDLATER

Business Affairs Operations
Manager

Business Affairs

✉ kfindlat@charlotte.edu



FRANK FLEMING, M.ED.

Executive Director
Student Affairs

✉ frank.fleming@charlotte.edu



AMY S. KELSO

Senior Associate General Counsel
Legal Affairs

✉ Amy.Kelso@charlotte.edu



BETH RUGG

Assistant Vice Chancellor for Client
Engagement

The Office of OneIT

✉ Beth.Rugg@charlotte.edu



DEB THOMAS, PH.D.

Associate Vice Chancellor
Research

✉ dthoma88@charlotte.edu



LESLIE ZENK, PH.D.

Associate Provost and Chief of Staff
Academic Affairs

✉ lzenk@charlotte.edu



AI Overview

Artificial Intelligence

Artificial Intelligence, or AI, refers to a computer's ability to perform tasks usually associated with human beings like writing, creating images or videos, or performing data analysis.

Generative AI

Generative AI is a branch of AI that refers specifically to software applications – like OpenAI's ChatGPT, Microsoft's Copilot, Adobe Firefly, etc. – that can generate text, images, videos, music, etc.

Charlotte's AI Vision



“

With AI's growing presence, it is important for faculty, staff and students — now and moving forward — to adopt a university-wide understanding and acknowledgement of its acceptable, ethical and responsible use.

As we prepare our students to enter a workforce that will require proficient use of AI tools, regardless of their field, students will be looking to faculty and staff to model the appropriate use of those tools. We are making that possible in a number of ways

”

-Chancellor Gaber & Provost Troyer, Aug 21, 2024, email to faculty and staff

Guiding Principles



Research and Innovation

Foster a culture of AI research and innovation including the range of societal impacts and ethical use. Embrace opportunities for operational efficiency.

Ethical Use and Integrity

Commitment to standards that promote fairness, transparency, and accountability.

Privacy and Data Protection

Safeguard personal data and adhere to data protection regulations.

Inclusivity and Accessibility

Ensure AI is accessible to all members of the university community, regardless of background or ability. Identify and mitigate biases in AI systems to promote equity and fairness.

Transparency

Ensure AI processes and decisions are transparent and understandable to all stakeholders.

Accountability

Establish clear lines of accountability for the deployment and outcomes of AI.

Continuous Learning

Provide continuous learning opportunities for students, faculty and staff about AI technologies, ethical considerations, and best practices.

Performance

Assess progress through relevant measures to ensure continuous improvement.

Transformative Impact of AI

AI tools can transform how we work, teach, and learn. AI allows us to:

Increase productivity
on daily tasks



Create text and media
content



Experience
personalized training



Provide personalized
24/7 support



Improve research
workflows



Prepare students to
use AI in their field

* From [Generative AI Usage Guidelines](#) (OneIT slide deck)

AI Across UNC Charlotte

Students



- AI is an inevitable part of the workforce students will enter.
- Students must be prepared—regardless of their field—to use AI tools proficiently.

Faculty and Researchers



- Charlotte researchers are developing and applying AI technology in exciting and meaningful ways across nearly all disciplines.
- Interdisciplinary collaborations, research centers and recently funded IGNITE centers have emerged and are growing rapidly.

Staff



- AI tools are available for performing work efficiently and delivering high-quality outcomes.



Use AI Responsibly

Any individual using AI is responsible for understanding what data can be handled by the AI and what the AI is doing with the data.

› AI in Teaching and Learning

Moving Towards an AI-EMPOWERED Campus!

Center for Teaching & Learning

Programs and resources for faculty and instructional staff to support the increasing role that Generative Artificial Intelligence (AI) is playing in shaping teaching, learning, and classroom learning experiences.

AI ACROSS THE CURRICULUM

***SHAPING NEXT-GENERATION LEARNING EXPERIENCES
WITH GENERATIVE AI TOOLS THROUGH
INNOVATION IN AI LITERACY, DESIGN, AND ETHICS***

Seven Priority Areas on Teaching and Learning with AI

*AI ACROSS
THE
CURRICULUM*

*FACULTY
GRANTS*

*MICROCREDENTIALS
ON AI*

*POLICIES
ON AI*



*CAMPUS
CONVERSATIONS*

*ENTERPRISE
SOFTWARE*

*THOUGHT
LEADERSHIP*

AI ACROSS THE CURRICULUM

SHAPING NEXT-GENERATION LEARNING EXPERIENCES
WITH GENERATIVE AI TOOLS THROUGH
INNOVATION IN AI LITERACY, DESIGN, AND ETHICS

AI Across the
Curriculum

AI Faculty Fellow
Application

Quality Enhancement
Plan

RealizeIt

Inscribe

TOWARDS AN AI-READY CAMPUS!

CTL AI Initiatives



teaching.charlotte.edu/ai

Seven Priority Areas

AI ACROSS THE CURRICULUM

*Workshops
Teaching Guides
Toolkits*

FACULTY GRANTS

*Scholarship on
Teaching and Learning*

MICROCREDENTIALS ON AI

*Next-Generation Learning
with Generative AI Tools*

POLICIES ON AI

*Syllabus Policies
Academic Integrity*



CAMPUS CONVERSATIONS

*AI Institutes
AI Roundtable*

ENTERPRISE SOFTWARE

*MS Copilot
Gemini
Canvas AI*

THOUGHT LEADERSHIP

*Steering Committee on AI
CTL Faculty Fellows
Faculty AI Committee (AA)
AI.Charlotte.Edu
Charlotte Magazine*

AI Institute for Smarter Learning



1st AI Institute	160	May 18, 2023
2nd AI Institute	250	May 15, 2024
3rd AI Institute		May 14, 2025

Call for Presentations: Feb 2025

Need your help to capture campus practices

Encourage faculty to submit

AI in Teaching and Learning Task Force (AA)

Representatives

- **Lina Zhou** Belk College of Business
- **Mona Azarbayjani** College of Arts + Architecture
- **Daniel Maxwell** Cato College of Education
- **Mohsen Dorodchi** College of Computing and Informatics
- **Lufei Young** College of Health and Human Services
- **Sam Suptela** College of Science
- **Justin Cary** College of Humanities & Earth and Social Sciences
- **Qiang Zu** William States Lee College of Engineering
- **Beth Caruso** Library

Co-Chairs

- **Kiran Budhrani** School of Professional Studies

Classroom Policies on AI

- Mindset
 - AI to support student learning and success
 - Promote positive, ethical, responsible use
- Faculty instructions and syllabus policies
 - [CTL guidelines](#)
 - [Suggested Syllabus Policies](#): See Policies on the use of generative artificial intelligence (AI)
 - [Classroom Communication on the Use of AI Tools](#)
- Use of AI for academic exercises outside authorized parameters may subject students to charges under the [Code of Student Academic Integrity](#) (Use of Unauthorized Materials)

› AI in Research



Tools in Research Administration

- ❑ OneIT Project examining types of tools
- ❑ Where can they make the greatest impact on processes



Guidance for Conducting Research

- ❑ Establishing Research AI Council to provide guidance on use in research in October
- ❑ Topics: IRB, authorship, data analysis, proposal writing, conducting reviews, etc.
- ❑ Many policies can be adapted to AI



AI Research

- ❑ Technical
- ❑ Applications
- ❑ Ethical and humane use

UNC Charlotte's Research Misconduct Policy

- Fabrication;
- Falsification;
- Plagiarism; or
- Other serious deviation from accepted practices

- Intentional;
- Knowing; or
- Reckless

HOW?

WHAT?

INTENT?

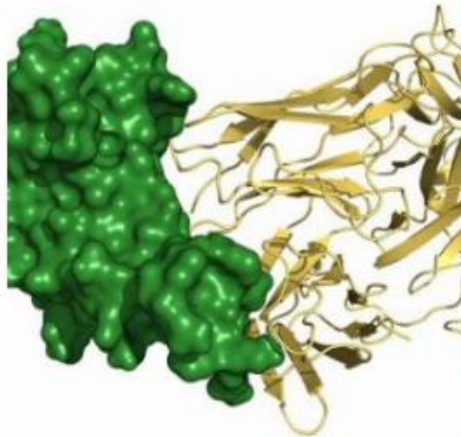
- Proposing, performing, or reviewing research; or
- Reporting the results of research or scholarship

Faculty Research at Charlotte



USHERING IN A SMART FUTURE RESPONSIBLY

In Hollywood, powerful evil artificial intelligences take over governments, destroy planets and predict our every move. In real life, the...



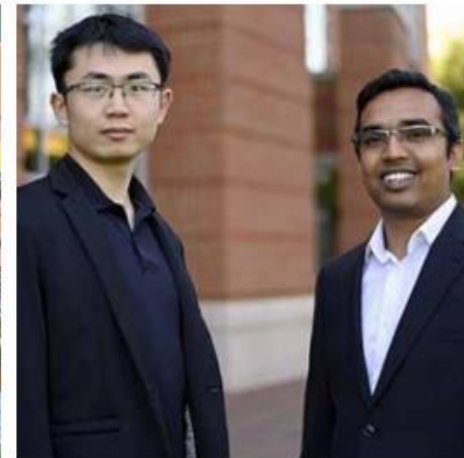
ADVANCED COMPUTING AT UNC CHARLOTTE INDICATES CURRENT ANTIBODIES EFFECTIVE

A team at UNC Charlotte's Center for Computational Intelligence to Predict Health and Environmental Risks (CIPHER) and Tuple, a Charlotte-based genomics consulting firm,...



HEAVY LIFTERS

Women researchers who manage, interpret and apply big data



NSF GRANTS AWARDED CCI RESEARCHERS TO EXPLORE WAYS AI CAN AID AGING POPULATION

Srijan Das and Xiang Zhang, two first-year faculty researchers in the College of Computing and Informatics, have received funding from the...

[Cutting-Edge AI Research](#)

Leveraging Collaboration through Centers



Additional Considerations

- Data Privacy and Protection
 - The collection and use of personal data must comply with applicable legal requirements (e.g., HIPAA and FERPA).
 - Strong cybersecurity measures must be in place to protect sensitive data from breaches or unauthorized access
- Intellectual Property Rights and Ownership
 - Establish clear expectations regarding the ownership of AI generated outputs.
- Ethical Use of AI
 - Ensure that research utilizing AI is aligned with ethical standards and avoids bias or discrimination.
- Expectations regarding the appropriate use of AI vary based on the context and discipline. However, researchers should always:
 - attribute ideas in the proper manner
 - ensure the accuracy of facts
 - use authentic sources, and
 - ensure that AI use is transparent

› AI in the Workplace

AI in the Workplace

**Individual
Use**

**Embedded
in systems**

**Oneit-provided
Specialized
software**

**Think
about the
data!**

**Divisional
working
groups**

Using AI Responsibly

Review the following University policies, guidelines, and resources that will help you ensure you are using AI responsibly.



01

Know University data retention policies

Familiarize yourself with [UNC Charlotte data retention policies](#) when storing recordings and other AI outputs.

02

Follow University procurement guidelines

Follow all [procurement guidelines](#) when purchasing or using free tools

03

Use University-approved tools

Use solutions that have been [reviewed and approved](#) by the University whenever possible

Be Transparent when Using AI

Be mindful when using AI that can impact decisions, have ethical or legal ramifications, or infringe on the privacy of others.

Notify meeting participants if AI tools are being used in your meetings

Acknowledge and document if AI tools are used to aid in writing and research

**Transparency
with AI use**

Cite AI tools that are used in the creation of content

Inform stakeholders if AI tools are used to help draft documentation, policy, etc.

Campus-wide AI tools Available

The Office of OneIT maintains a curated list of AI tools that are available and approved for use across campus. Below are some popular tools:



Adobe Firefly

Create images using this AI tool Included in Adobe Creative cloud



CAISY AI Simulator

Experience adaptive training simulations located in the Learning and Development Portal



Microsoft Copilot in browser

Draft and brainstorm ideas for text-based content with this AI tool accessible through a web browser



Zoom AI Companion

Get assistance transcribing your meetings and more with this AI tool available in Zoom



Google Gemini in browser

Similar to Copilot you can draft and brainstorm ideas for text-based content with this AI tool accessible through a web browser

Zoom AI Companion

Common-sense best practices:

Consider the nature of your meeting

- data may be subject to the North Carolina Public Records Act or discoverable in the event of any dispute or litigation to which UNC Charlotte is a party

Consider the audience

- meeting summary; accessibility features

Preview and proofread

- ensure accuracy before sharing

Respect

- notify attendees and allow for objections; if attendee objects, do not use AI features

AI bots (otter.ai, read.ai, etc.)

- be aware of privacy and data security issues; meeting hosts can expel unwanted bots from meetings by placing them in a waiting room or removing them from the meeting



AI Software Guidance



OneIT's Software List:

- Provides [guidance](#) on using campus-wide, specialized, and popular AI software with university data
 - Green indicates the software is approved for use; a campus agreement is in place with approved data security and privacy policies.
 - Yellow indicates use with caution; a campus-wide agreement is NOT in place.
 - Red indicates do not use. No agreement is in place to protect university data.
- All non-campus-wide software, including free and research-related requests, must fill out the [Software & IT-Related Request Form](#).

AI Security Checklist

Protect UNC Charlotte's confidential information and your own.

- ✓ Do not enter confidential or legally restricted data (e.g., personnel records or data protected by FERPA, HIPAA, PCI etc.) or any data that [Charlotte's data classification policy](#) identifies as level 2 or 3 into an AI tool.

Assume all information shared will be made public.

- ✓ Treat all information shared through an AI tool as though it will become public. Do not share information that is personal or sensitive and be mindful that the information you input into an AI tool may be retained by the vendor.

Follow all [procurement guidelines](#) when purchasing or using free tools.

- ✓ All AI purchases, including enhancements to existing licenses, must follow UNC Charlotte's established purchasing procedures. This ensures appropriate legal, privacy, and security reviews are conducted.

Use enterprise campus-wide tools whenever possible.

- ✓ Use solutions that have been [reviewed and approved](#) by the University whenever possible. Unlike free consumer versions, enterprise-wide approved tools require your campus login and typically do not use your data to train their systems.

Be alert for bias and inaccuracy.

- ✓ AI-generated responses can be biased, inaccurate, inappropriate or may contain unauthorized copyrighted information. We are each responsible for the content of our work product. Continually review and verify outputs generated by AI tools to ensure accuracy.

Data & Privacy Concerns

- A great use of AI tools is to help draft content to give you a starting place for new projects, but be responsible and careful when using AI.
- AI tools can be used to draft content such as:
 - Outlines for agendas, memos, etc.
 - Social media posts
 - HTML code for web pages
- Remember that **you** – not the AI tool – are the expert!
 - AI tools can produce biased results
 - AI tools may include copyrighted material as part of their results



> Q&A

Contacts



Isabel Alele

Associate General Counsel

ialele@charlotte.edu



Kiran Budhrani

Director of Teaching & Learning Innovation

kiranbudhrani@charlotte.edu



Beth Rugg

Assistant Vice Chancellor for Client Engagement, OneIT

Beth.Rugg@charlotte.edu



Deb Thomas

Ph.D., Associate Vice Chancellor for Research

deborah.thomas@charlotte.edu



Resources

Teaching and Learning

- [CTL guidelines](#)
- [Suggested Syllabus Policies](#)
- [Code of Student Academic Integrity](#)
- [Classroom communication on the use of AI tools](#)

Research

- [University Policy 309, Responding to Allegations of Misconduct in Research and Scholarship](#)

Workplace

- [OneIT AI pages](#)
- [Software Guidance](#)
- [Generative AI Usage Guidelines](#)
- [Standard for Zoom AI Companion](#)
- [Data Handling Guidelines](#)

General

- ai.charlotte.edu